

## AVM ConfigWare User's Guide

© Copyright 2002

### **EVERTZ MICROSYSTEMS LTD.**

5288 John Lucas Drive, Burlington, Ontario, Canada, L7L 5Z9

Phone: 905-335-3700

Fax: 905-335-3573

Internet: Sales: [sales@evertz.com](mailto:sales@evertz.com)

Tech Support: [service@evertz.com](mailto:service@evertz.com)

Web Page: <http://www.evertz.com>

Version 1.1 January 2002

The material contained in this manual consists of information that is the property of Evertz Microsystems and is intended solely for the use of purchasers of the AVM ConfigWare Software that is provided with the AVM series modules. Evertz Microsystems expressly prohibits the use of this manual for any purpose other than the operation of this software.

All rights reserved. No part of this publication may be reproduced without the express written permission of Evertz Microsystems Ltd. Copies of this guide can be ordered from your Evertz products dealer or from Evertz Microsystems.

\*\*Products, logos and company names mentioned herein may be trademarks of their respective owners.

**REVISION HISTORY**

<b><u>REVISION</u></b>	<b><u>DESCRIPTION</u></b>	<b><u>DATE</u></b>
1.0 - Beta	Beta Version	Jul 01
1.0	Original Version	Aug 01
1.1	Typographical changes and Formatting	Jan 02
1.2	Added support for 7761AVM-DC	May 02

## TABLE OF CONTENTS

1.	INTRODUCTION .....	1
2.	MINIMUM SYSTEM REQUIREMENTS .....	1
2.1.	SYSTEM REQUIREMENTS .....	1
2.2.	LINKING THE PC TO THE AVM VIA SERIAL I/O .....	1
3.	INSTALLATION.....	2
3.1.	AVM CONFIGWARE SUPPORT .....	2
3.2.	REMOVING PREVIOUSLY INSTALLED VERSIONS OF AVM CONFIGWARE .....	2
3.3.	INSTALLING AVM CONFIGWARE.....	2
4.	RUNNING AVM CONFIGWARE .....	3
4.1.	UPLOADING/DOWNLOADING AVM CONFIGURATIONS .....	4
5.	TROUBLESHOOTING .....	5

### Figures:

Figure 1 :	COM port location on 7760AVM .....	1
Figure 2 :	COM port location on 7761AVM-DC .....	2
Figure 3 :	AVM ConfigWare Menu Toolbar and Audio Configuration Menu.....	4

### 1. INTRODUCTION

AVM ConfigWare is an AVM configuration tool designed to ease AVM card set-up. Based on its ConfigSet predecessor, AVM ConfigWare extends the card-edge, push-button/toggle AVM configuration technique to the end-user's PC. Simple, easy-to-use menus imitate the AVM's on-screen display menus offering end-users the convenience of configuring AVM products from their PC instead of through the card-edge, push-button toggle mechanism.

In addition, as with the ConfigSet utility, existing AVM configurations can be saved on a PC's hard drive, and sent to new cards through a COM port link. AVM ConfigWare also allows you to save and view AVM configurations for supported AVM products in a user-friendly layout.

### 2. MINIMUM SYSTEM REQUIREMENTS

#### 2.1. SYSTEM REQUIREMENTS

To successfully install and run AVM ConfigWare, a Pentium 133 or higher. The computer must be running Windows 98, Windows NT4 (SP-4 or higher) or Windows 2000 versions with Western Character Sets.

#### 2.2. LINKING THE PC TO THE AVM VIA SERIAL I/O

A link from the computer's Serial COM port to the AVM's COM port is necessary for card set-up through AVM ConfigWare. Using the 7700PB serial cable (provided with the AVM), connect the PC's Serial (DB-9) COM port to the AVM module (J24 on the 7760AVM, as shown in Figure 1, and J1 on the 7761AVM-DC, as shown in Figure 2). Note that pins 1 and 5 on the header should be removed and pins 1 and 5 on the cable connector should also be plugged. If the cable is not keyed, make sure that you install it so that the cable is towards the front of the frame when the module is installed (i.e. so that it passes over the short length of the card). Pin 1 of the ribbon cable is brown and will be facing the edge of the module opposite the card ejector when the cable is correctly installed.

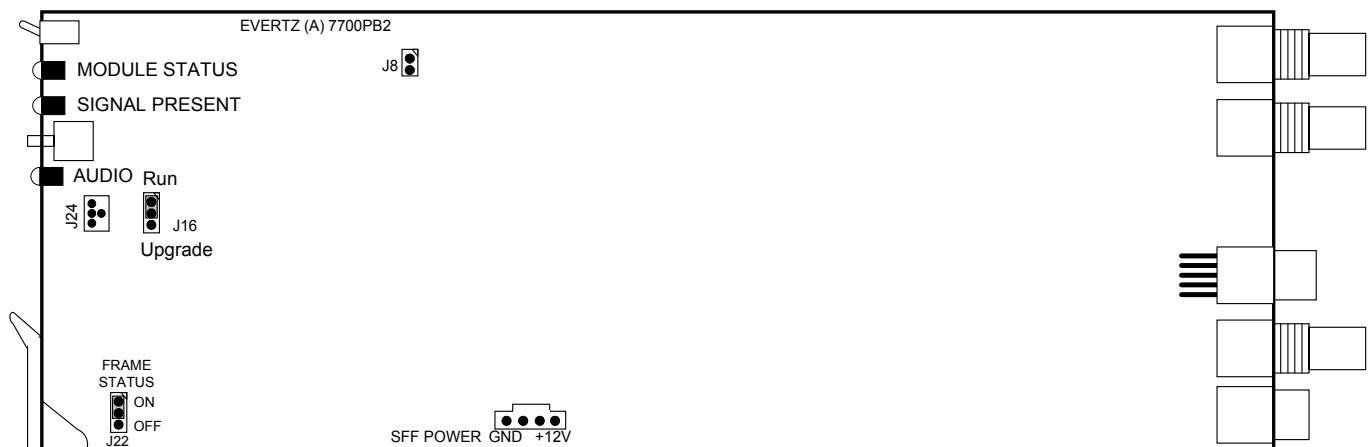
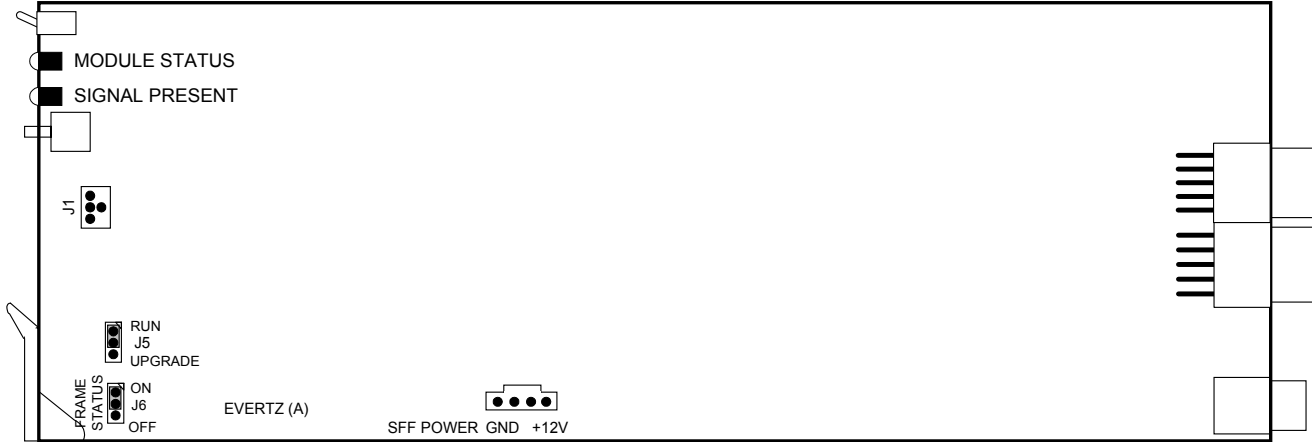


Figure 1 : COM port location on 7760AVM



**Figure 2 : COM port location on 7761AVM-DC**

### 3. INSTALLATION

#### 3.1. AVM CONFIGWARE SUPPORT

AVM ConfigWare supports the following AVM products with firmware versions. To confirm the specific firmware version of your product, access the on-screen display (OSD) menu, select “Utilities” then select “About...” For further detailed instructions, consult your product manual.

Product	Firmware Version
7760AVM (A – G)	v2.0 or greater
7761AVM-DC	v1.2 build 28 or greater

#### 3.2. REMOVING PREVIOUSLY INSTALLED VERSIONS OF AVM CONFIGWARE

If a previous version of ConfigSet or AVM ConfigWare was installed on your PC, uninstall it prior to loading AVM ConfigWare v1.0 or greater. Previous versions may be removed through the *Start* menu of your Windows operating system. Then,

- Choose *Settings* option
- Choose *Control Panel*
- Double-click *Add/Remove Programs* icon
- Select *Evertz AVM ConfigWare* (or similar) from the scroll list
- Click the *Add/Remove...* button
- Click *Yes* at the prompt

The “UninstallShield” will now remove previously installed versions and its components.

#### 3.3. INSTALLING AVM CONFIGWARE

After removing any previous versions of the application software, open *Evertz AVM ConfigWare Setup.exe* file located on the accompanying CD-ROM (or downloaded from [www.evertz.com](http://www.evertz.com)) to install AVM ConfigWare. An InstallShield Wizard will guide you through the installation process.

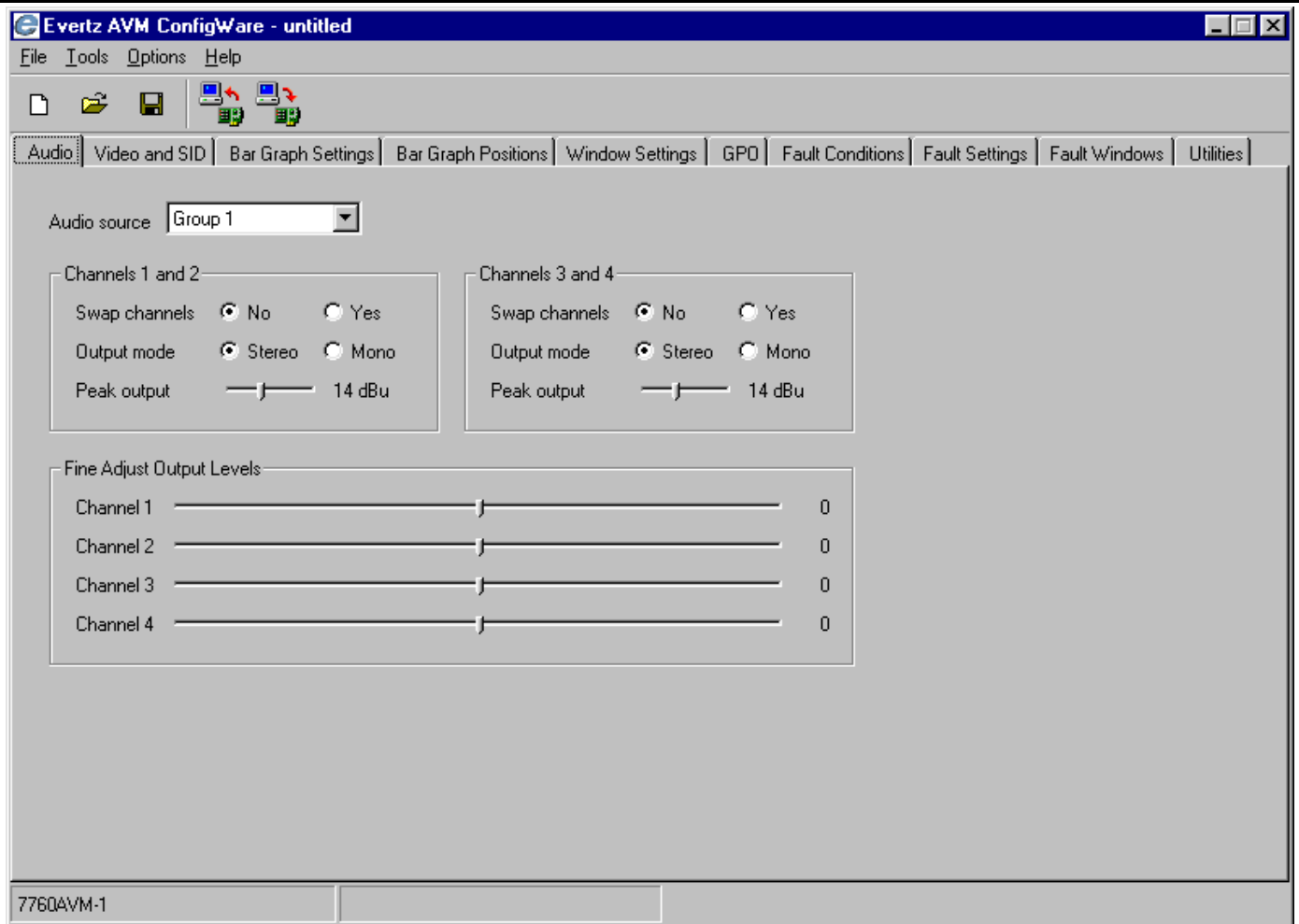
The InstallShield Wizard will prompt you to enter values for User Name, Company, Destination Directory and Program Folder. For installation convenience, default settings are available. Clicking on *Next* after making a new or default selection progresses through the install procedure. A summary of current settings is provided before actual installation occurs. If any changes are required, the *Back* button will return you to previous screens.

At the end of installation, an option to launch the application is provided via the check box *Yes, launch the program*. If immediate launch is not required, click on *Finish* to end the installation procedure and return to your Main Windows screen.

#### 4. RUNNING AVM CONFIGWARE

To launch AVM ConfigWare, from the Windows menu select *Start>Programs>Evertz>AVM ConfigWare>AVM ConfigWare* if the default settings were selected during AVM ConfigWare installation. If different destinations were chosen, proceed to that directory to launch AVM ConfigWare. It is highly recommended to create a short-cut icon to simplify AVM ConfigWare start-up for future use. The menu toolbar and audio menu is shown in Figure 2.

<i>Files</i>	This menu item offers "New", "Open", "Save", "Save As" and "Exit" options to initiate new AVM configurations, open saved configurations, or save the latest changes.
<i>Tools</i>	"Get" (F4) and "Send" (F5) Configuration options are available through this menu option or through the icons on the lower toolbar.
<i>Options</i>	This menu item allows the user to select the card type to be configured as well as the COM port for configuration "Gets" or "Sends". Currently the 7760AVM and 7761AVM-DC are supported.
<i>Help</i>	Information about AVM ConfigWare is presented in this menu option.




**Figure 3 : AVM ConfigWare Menu Toolbar and Audio Configuration Menu**


The AVM ConfigWare window exhibits tabs similar to the on-screen display menus for specific AVMs. For example, AVM ConfigWare offers *Audio*, *Video & SID*, *Bar Graph Settings*, *Bar Graph Positions*, *Window Settings*, *GPO*, *Fault Conditions*, *Fault Settings*, *Fault Windows* and *Utilities* tabs for configuring the 7760AVM. Subsequently, for specific details and definitions about the configurable AVM parameters, please refer to the particular AVM manual.

### 4.1. UPLOADING/DOWNLOADING AVM CONFIGURATIONS

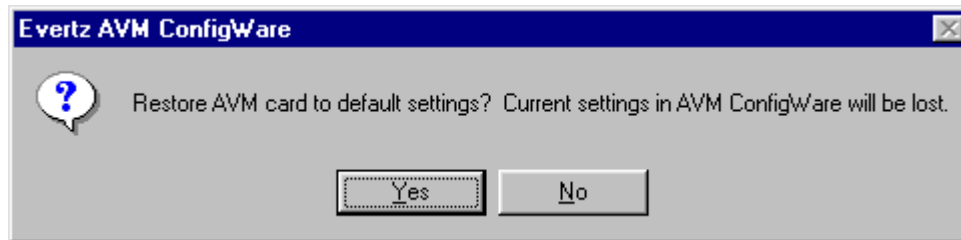
AVM ConfigWare can be used to change single or multiple parameters on an AVM card. Once connected, an initial "Get" command is recommended to download the latest settings from the AVM. The "Get" command can be executed from the host PC by pressing the "F4" key, through the AVM ConfigWare

*Tools* menu or by pressing the toolbar  icon.

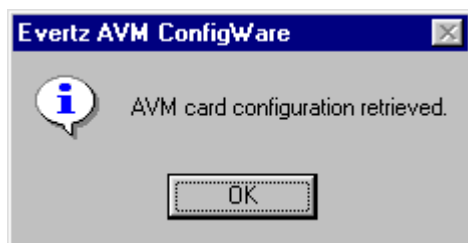
Alternatively, a newly created or previously saved configuration can be uploaded using a similar procedure. When AVM parameters are modified using AVM ConfigWare, the "Send" command is used to

upload the new values to the AVM card. The “Send” command is available through the host PC by pressing the “F5” key, through the AVM ConfigWare *Tools* menu, or by pressing the toolbar  icon.

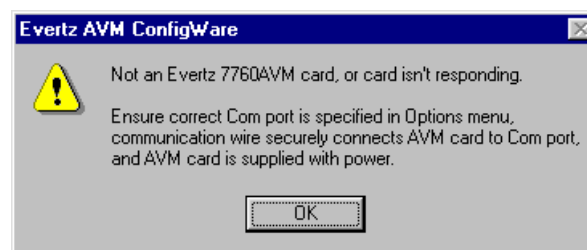
A “Factory Default” upload option is available through the AVM ConfigWare *Utilities* menu. This option re-configures the connected AVM to the factory default settings after prompting the user to confirm the upload. Selecting this option deletes any unsaved configuration changes made using AVM ConfigWare.



In all cases, successful receipt or transfer of configurations is acknowledged by an appropriate message box depicted below.



## 5. TROUBLESHOOTING



### “Not an Evertz 7760AVM card, or card isn’t responding.”

– This message indicates that the host PC and the AVM card are not communicating. This could be the result of an incorrectly specified COM port setting, or other failed link.

### “Data could not be transmitted. Card may be busy. Please try again.”

– This message identifies an unsuccessful transfer of configuration data to the AVM product. This is caused when the AVM card is “busy” processing video or audio data and can not process the incoming configuration change data at that time.