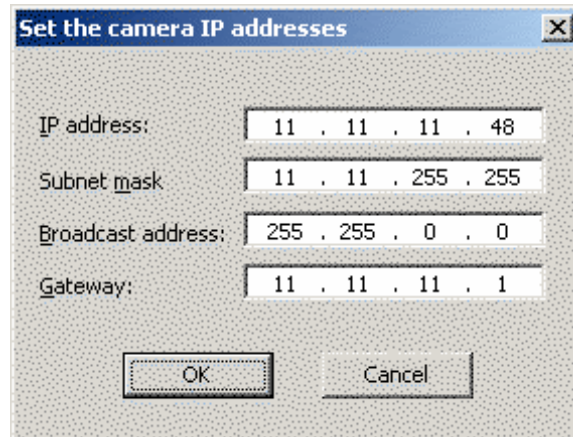


# Assigning an IP Address to a Phantom Camera

Phantom Camera Control software allows the user to assign a user defined, **static** IP Address to an Ethernet Phantom camera by performing the following steps:

1. Ensure that the Camera Control Unit has a dedicated IP Address of 100.100.100.1 with a subnet mask of 255.255.0.0
2. Ensure camera is cabled properly and apply power to the camera.
3. Start the Phantom Camera Control application
4. Click on the Acquisition menu option
5. Click Restore NV Memory
6. With the Restore Non-Volatile Memory Setting dialogue window open, simultaneously depress the <ALT> + <I> keys on the keyboard to invoke the Set the Camera IP Addresses dialogue window
7. In the Set the Camera IP Addresses dialogue window, enter the appropriate IP information for your network. If you not sure what to enter, check with your local network administrator.
8. Power down the camera.
9. Change the IP Address and subnet Mask information on the Camera Control Unit to ensure that both the camera and the control unit have been assigned to the same network (not the same IP address).
10. Restart the control unit
11. Re-apply power to the camera.
12. Restart the Phantom Camera Control application.



## Note:

1. If the control unit does not detect the camera, recheck the settings of the control unit.
2. Setting the IP Address of a camera does not remove its default IP address. In the event you need to verify the camera's user defined IP Address, or made a mistake entering the information, simply reset the control unit's IP Address to 100.100.100.1, and reconnect to the camera making any necessary changes using the steps above.